

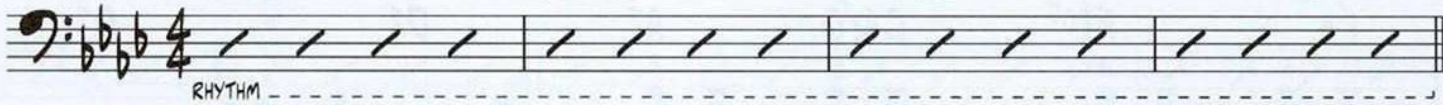
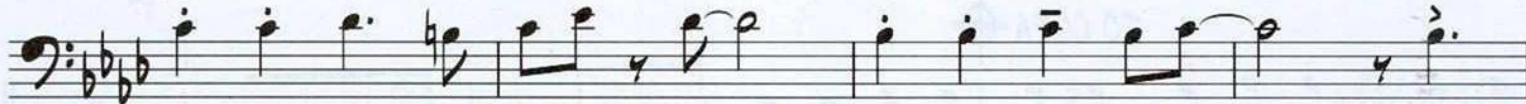
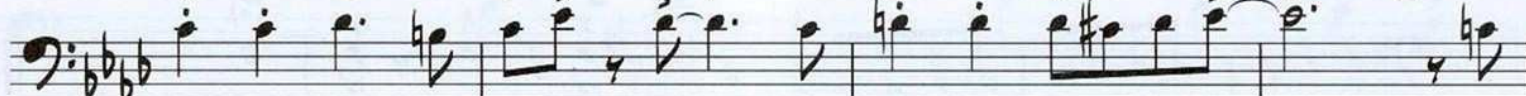
A SLEEPIN' BEE

LYRIC BY TRUMAN CAPOTE AND HAROLD ARLEN

MUSIC BY HAROLD ARLEN

♩: C VERSION

MED. SWING

 Bb_{mi}^7/Eb C_{mi}^7/Eb Bb_{mi}^7/Eb $Eb^7(b9)$  Ab_{MA}^7 Eb^7_{SUS} Ab_{MA}^7 Eb^7_{SUS} Ab_{MA}^7 D^7 Db_{MA}^7 G^7  Ab_{MA}^7 Db^7 C^7 $F^7(b9)$ Bb_{mi}^7 E^7 Eb^7 Db^7  C^7 $C^{+7}(b9)$ F^7 $F^{+7}(b9)$ Bb^7 Bb^{+7} Eb^7_{SUS} $Eb^7(b9)$  Ab^7 Ab^{+7} Db^7 G^7 Bb_{mi}^7 C_{mi}^7 Db^6 D^7 Eb^7_{SUS} $Eb^7(b9)$ S Ab_{MA}^7 Eb^7_{SUS} Ab_{MA}^7 Eb^7_{SUS} Ab_{MA}^7 D^7 Db_{MA}^7 G^7  Ab_{MA}^7 Db^7 C^7 $F^7(b9)$ Bb_{mi}^7 E^7 Eb^7 Db^7  C^7 $C^{+7}(b9)$ F^7 $F^{+7}(b9)$ Bb^7 Bb^{+7} Eb^7_{SUS} $Eb^7(b9)$ 

Ab_{MA}⁷ Db_{MA}⁷ C_{MI}⁷ F_{7(b9)} B_{b7} Eb₇ C₇ F_{7(b9)}

B_{b7} B_{b+7} Eb_{7SUS} Eb₇ Ab₆ SOLO BREAK

TO CODA ⊕

SOLO

Ab_{MA}⁷ Eb_{7SUS} Ab_{MA}⁷ Eb_{7SUS} Ab_{MA}⁷ D₇ Db_{MA}⁷ G_{b7SUS}

Ab_{MA}⁷ Db₇ C₇ F_{7(b9)} B_{bMI}⁷ E₇ Eb₇ Db₇

C₇ C_{+7(b9)} F₇ F_{+7(b9)} B_{b7} B_{b+7} Eb_{7SUS} Eb_{7(b9)}

1. Ab₇ Ab₊₇ Db₇ G_{b7} B_{bMI}⁷ C_{MI}⁷ Db₆ D₀₇ Eb_{7SUS} Eb_{7(b9)}

2. Ab_{MA}⁷ Db_{MA}⁷ C_{MI}⁷ F_{7(b9)} B_{b7} Eb₇ C₇ F_{7(b9)}

B_{b7} B_{b+7} Eb_{7SUS} Eb₇ Ab₆ B₇ B_{b7} D.S. AL CODA A₇

⊕ CODA B_{bMI}⁷ A_{+7(b9)} Ab₇